

SonoLite™

Acoustical Absorption Panels



FEATURES:

- Wall Mounted Acoustical Absorption Panels
- Reduce Unwanted Acoustical Reflections
- Tame Chaotic Reverberation
- Affordable Absorption Solution For Professional & Residential Settings
- EZ-Stick Pro™ Mounting Tabs Included

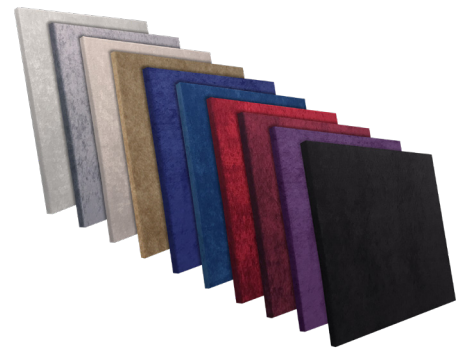
Auralex's SonoLite™ panels are fabric-wrapped Studiofoam® acoustical absorption panels that provide excellent broad band frequency control. The SonoLite panel can be used for wall or ceiling applications and the Bass Trap panel can be installed in either vertical or horizontal orientations where walls & ceilings meet. Auralex Studiofoam Pro is used in the SonoLite panel to maximize absorption performance in it's 1" thickness.

Auralex Studiofoam is used in the 3" thick Bass Trap panel to optimize low frequency performance resulting in highly effective control preventing bass build-up and cancellation that mask your room's true low-frequency character.



SonoLite™ Product Specs:

Dimensions	1" Thick x 2' Wide x 2' Tall							
Bass Traps Dimensions	3" Thick x 2' Wide x 2' Tall							
Available Colors	Oyster, Grey, Beige, Tan, Wedgewood, Royal, Wine, Burgundy, Purple & Black							
Sound Absorption Coefficients								
Frequency	125 Hz	250 Hz	500 Hz	1000 Hz	2000 Hz	4000 Hz	NRC	
SonoLite	0.11	0.44	0.75	1.04	1.00	0.97	0.80	
SonoLite Bass Traps	0.55	1.01	1.25	1.20	1.18	1.14	1.15	



All copyrightable material are ©Copyright Auralex Acoustics, Inc., 1994-2019. Auralex, Real-World Acoustics, Studiofoam and Total Sound Control are registered trademarks, and SonoLite is a trademark of Auralex Acoustics, Inc. All rights reserved. Proudly designed and manufactured in the U.S.A.

While many Auralex products are fire retardant and/or self extinguishing to varying extents, we cannot guarantee that any product meets the specific building code regulations in your area as regulations widely vary from place to place.

Check with your local fire marshal or building inspector for approval prior to purchasing or installing any of our products. Auralex will not be held liable for property damage or injuries caused by the misuse of our products.

For more information visit Auralex.com/tools/testing-data/fire-testing-data/

Real-World Acoustics®

1-800-959-3343 / 317-842-2600
9955 Westpoint Drive, Suite 101, Indianapolis IN USA 46256

620-112.SonoLite Family Spec Sheet (New Colors) (12/18/2018 - 10:49 AM)



SonoLite™ SonoKits™

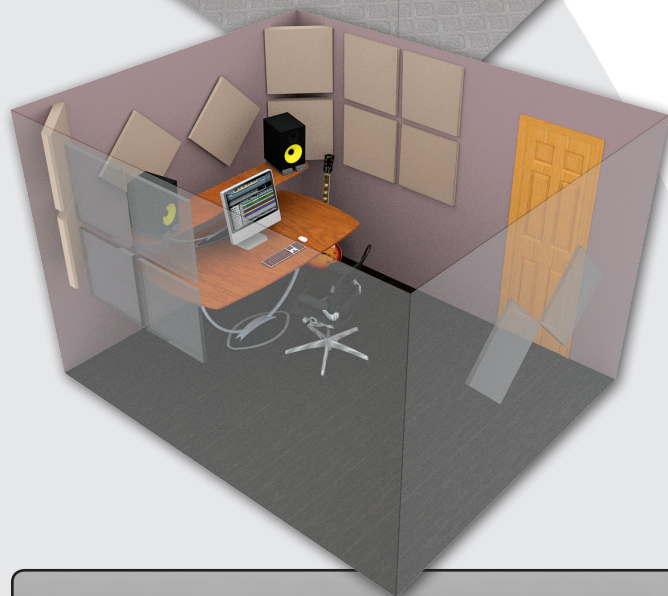
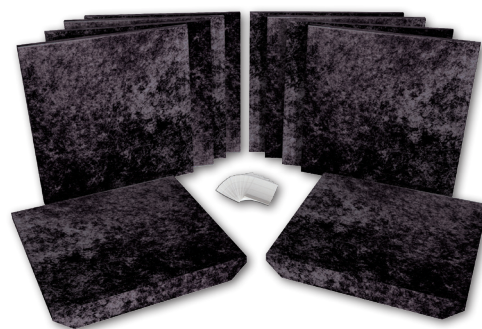
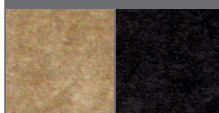
Modeled after the popular **Auralex® Studiofoam® Roominator™ Kits**, **SonoLite™ SonoKits™** are convenient and modular configurations of our popular **SonoLite Panels** and **SonoLite Bass Traps**. They offer the same superior performance as our industry leading **Studiofoam** with a stylish velour fabric covering. **SonoLite SonoKits** are cost effective and an excellent choice for residential applications such as home studios and theaters.



SonoLite™ SonoKit-1™ Includes:

- 8 SonoLite Panels
- 2 SonoLite Bass Traps
- 40 EZ-Stick Pro Tabs

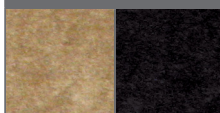
Available Fabrics:



SonoLite™ SonoKit-2™ Includes:

- 12 SonoLite Panels
- 4 SonoLite Bass Traps
- 64 EZ-Stick Pro Tabs

Available Fabrics:



SonoLite™ Cloud

SonoLite Cloud Panels are configurations of 2' x 4' panels that can be flown individually or arrayed to form a 6' x 4' cloud. Assembly hardware with fly points included.

Available Fabrics:

